

What the research says

Over the years, there has been a significant amount of research conducted in Ontario on the emergency department use of adults with Developmental Disabilities (DD). We have summarized a few key points here, and also prepared a PowerPoint presentation that can be used to build awareness in your site.

Key Findings:

1) People with DD have very high rates of ED use.

- 50% of all adults with DD visit an ED in a 2-year period.
- 3-4 times more likely to be frequent visitors.

2) In addition to clinical need, lack of access to prevention and management supports predict why people with DD visit the ED.

3) Treatment in the ED is inadequate for many people with DD, and users report dissatisfaction.

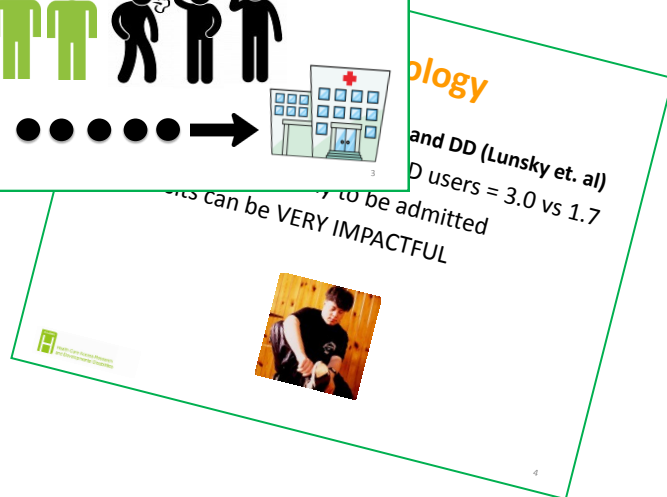
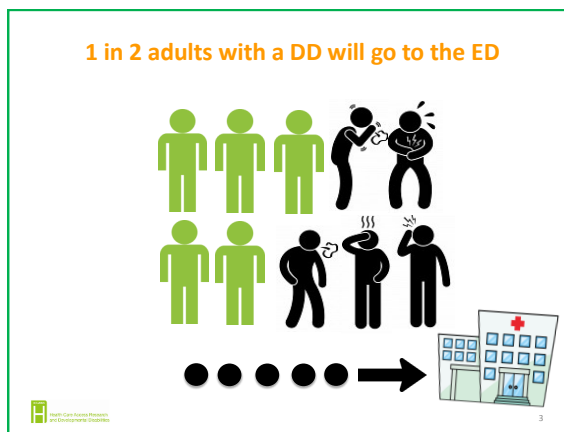
- Caregivers not often consulted; follow up often not requested or coordinated.



What does the Research Tell Us?
PowerPoint presentation



Video: Emergency Department use among people with DD.



PowerPoint Presentation: What does the research tell us?

Don't forget: these slides can also be used as posters or screen savers!



Improving emergency care for people with developmental disabilities

What does the research tell us?

Health Care Access Research and Developmental Disabilities

What does the research tell us about barriers experienced by clients, families and ED staff?

Health Care Access Research and Developmental Disabilities

ie reported experience ur women with intellectual abilities receiving nergency psychiatric rvice in Canada

What does the research tell us about barriers experienced by clients, families and ED staff?

Health Care Access Research and Developmental Disabilities

Emergency Psychiatric Services for Individuals with Intellectual Disabilities: A Review

Health Care Access Research and Developmental Disabilities

1 in 2 adults with a DD will go to the ED

Health Care Access Research and Developmental Disabilities

Lack of respect

- Rights
- Forced procedures
- Treated for a different complaint

Consent

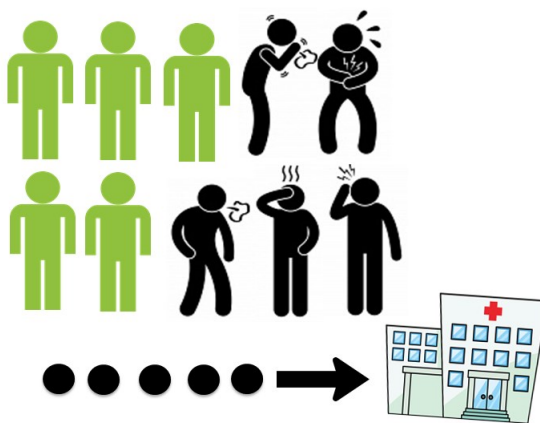
- Not given opportunity

Chemical and physical restraint

- Prior to alternative approaches

Lunskey & Gracey, 2009

1 in 2 adults with a DD will go to the ED



Health Care Access Research and Developmental Disabilities



Lunskey & Gracey, 2009

Download the PowerPoint presentation [here](#) or at www.hcardd.ca