



camhPSSP
Provincial System
Support Program

Highlights

2015/2016

Working collaboratively across sectors, the Provincial System Support Program at the Centre for Addiction and Mental Health moves evidence to action to transform mental health and addictions systems in Ontario.





A handwritten signature in black ink that reads "Rob Moore".

ROB MOORE

Executive Director's Note

I am pleased to share with you PSSP's Highlights 2015/2016.

Whenever I sit back and think about all of PSSP's work, I mean all of it, I am amazed at the depth and breadth of our activity. Trying to convey a true picture of the work we've done over the past year is not an easy task. This document is in no way a complete reporting; it is instead meant to be a true sampling of the richness of our undertakings.

When reflecting on the fiscal year I note that we continue to build connections, to better integrate our initiatives, and to more seamlessly draw on the broad expertise within our program to improve our work. This continuous improvement and focus, this evolution, is critical in our efforts to better support our system partners and advance *Ontario's Comprehensive Mental Health and Addictions Strategy*.

System change takes a long time and could not be achieved without the support and collaboration of our organization, CAMH; our funders, particularly the Ministry of Health and Long-Term Care; stakeholders and partners; local communities; people with lived experience and their families; and the whole PSSP team here in Toronto and across nine regions of Ontario.

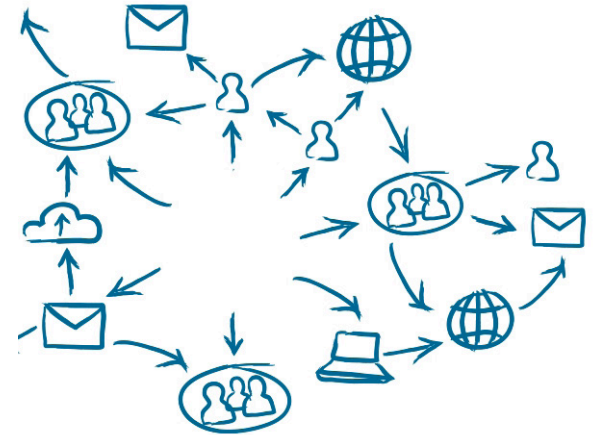
I hope you can take a few minutes to reflect on what PSSP has done this past year, and to consider all the things we've learned to help us achieve even better outcomes in the future.

We connect people and evidence

In 2015/2016, the Evidence Exchange Network (EENet) team met the knowledge exchange needs of a number of initiatives that are improving mental health and substance use treatment in Ontario.

EENet also launched nine [Communities of Interest \(Cols\)](#) which bring people together to develop and share new knowledge that will help improve understanding and action around a common problem. EENet's knowledge brokers provide customized knowledge exchange support and expertise to each Col.

Cols take a provincial approach and focus on mental health and substance use problems, especially as they relate to systems and services. Areas of focus include transition-aged youth, family caregivers, racialized populations, and housing and justice.



We put solutions in place where systems and services intersect

Youth experiencing mental illness and substance use issues, and who are in the court system, need to be screened to receive appropriate care. The Niagara Youth Court Screening Initiative is a coordinated community approach to achieving this goal.

This initiative, developed by the [Niagara Youth Justice Service Collaborative](#), has made it easier for youth to access care and move between sectors and services. Last year, the multi-sector team of service providers (pictured right) were present at the St. Catharines court house for all 19 youth court sessions to offer screening to youth. The team identified needs for mental health and addictions, housing, employment, and/or education.



The initiative is collecting data* to ensure that the best decision can be made around care and needs with this population. This information also helps the community know where to focus resources.

*All processes relating to screening and data collection adhere to the privacy and confidentiality requirements of the Youth Criminal Justice Act.

We facilitate evidence-informed decision-making

Launched in 2015, the Analytics Portal provides real-time information on substance misuse in the province. It is the first of its kind in the province to support the community addictions sector.

[Drug and Alcohol Treatment Information System](#) (DATIS) and CAMH Legal Services teamed up to create a data-sharing agreement for LHIN users to protect patient confidentiality and provide provincial level reports. For example, all 14 LHINs are now able to view trends in presenting problem substance, location of residence and treatment, to name a few.

DATIS and an external contractor worked closely with the community addictions sector to ensure the Analytics Portal was designed to meet their needs, and continues to support the training needs of new users.



PSSP's Kate Stechyshyn and Dan Elliot share the benefits of the Analytics Portal at the CAMH poster session.

We help streamline the system

In one of the largest clinical changes to Ontario's addiction system in more than two decades, we rolled out a new Ministry of Health and Long-Term Care-mandated package of screening and assessment tools: [the Staged Screening and Assessment \(SS&A\) process](#). The SS&A identifies both mental health and substance use issues. This approach enables better treatment for clients accessing addiction services funded by the province.

The SS&A process helps people find the right level of treatment based on their needs. For example, only clients who have been fully assessed will be referred to residential treatment. This results in better treatment planning and system efficiencies by increasing appropriate referrals

Last year, PSSP's implementation team supported SS&A roll out across eight local health integration networks (LHINS) and it continues to support implementation in the remaining six LHINs. Coaches are working with agencies to support training, the development of implementation plans, and proper use of the tools.



PSSP SS&A Implementation team

We create system change and improve health through training initiatives



Video feature of Mobile Training Teams Initiative

In 2015/2016, over 800 Aboriginal mental health and addiction workers in Ontario received training through the [Aboriginal Engagement and Outreach](#) team's Mobile Training Teams Initiatives and the Provincial Aboriginal Training Program.

Aboriginal workers are able to access training in or near their communities. The training programs include sessions based on wise-practices and evidence-based counselling techniques/interventions that have been culturally informed or adapted to better reflect the experiences, cultures, and histories of Aboriginal peoples. A range of implementation resources are provided which include online modules, in-person training, and post-training Virtual Learning Circles.

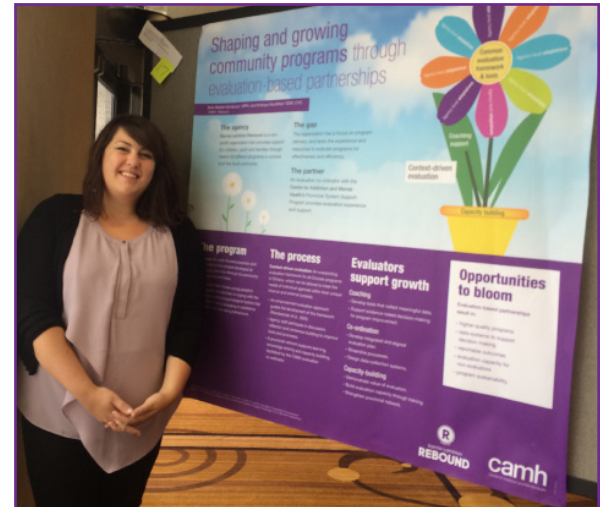
These training sessions are accredited by the Indigenous Certification Board of Canada and funded by the Ministry of Child and Youth Services.

We help communities evaluate

The [Choices program](#), developed by Rebound Sarnia-Lambton and delivered at ten sites across Ontario, is an opportunity for youth to gain drug awareness and life skills through behaviour modelling and goal setting in a supportive environment.

Over the past year, PSSP developed a sustainable evaluation plan for the Choices program in collaboration with the sites.

By coordinating the evaluation and reflection processes of all ten program sites across Ontario, we have a better picture of the overall impact of the program in the province. By coaching the agencies through this process, they build the capacity to apply good evaluation methods to their other programs, which leads to a stronger and more evidence-based mental health and addictions system.



PSSP's Sera Weafer-Schiarizza at the Canadian Evaluation Society Conference in St. John's, Newfoundland.

We help create enabling and supportive environments

Strengthening Your Voice (SYV), an [Opioid Resource Hub](#) initiative, trained eight people with personal and/or family experience of problematic use of opioids in sharing their stories with others.

SYV has partnered with CAMH's Beyond the Cuckoo's Nest (BTCN) program to expand this training to people with a larger range of mental health and addiction experiences. SYV program graduates participate in public speaking opportunities and at systems-level tables, effectively sharing their personal experiences to break down stigma and create change.

“We hope that this partnership will continue to support the learning of our co-educators and we look forward to sustaining this wonderful opportunity that supports individual recovery, courageous exploration and self-development through annual trainings.”

- CRAIG CURRAH AND SARAH BROMLEY,
BTCN FACILITATORS, CAMH CLINICAL

PSSP Provincial and Regional Offices



47%
growth

of [EENet Connect](#) membership. EENet Connect is an online community for members of Ontario's mental health and addictions system

7963

views (in English)

564

views (in French)

of Health Promotion Resource Centre's video, "[Promoting Mental Health: Finding a Shared Language](#)". The video is featured on 16 stakeholder websites

2330

Twitter followers of [@EENet_news](#), [@SISC_Connect](#), and [@DATIS_DidUKnow](#)

camhPSSP
Provincial System
Support Program

33 Russell Street
Toronto ON
M5S 2S1

Email: pssp@camh.ca
www.camh.ca

