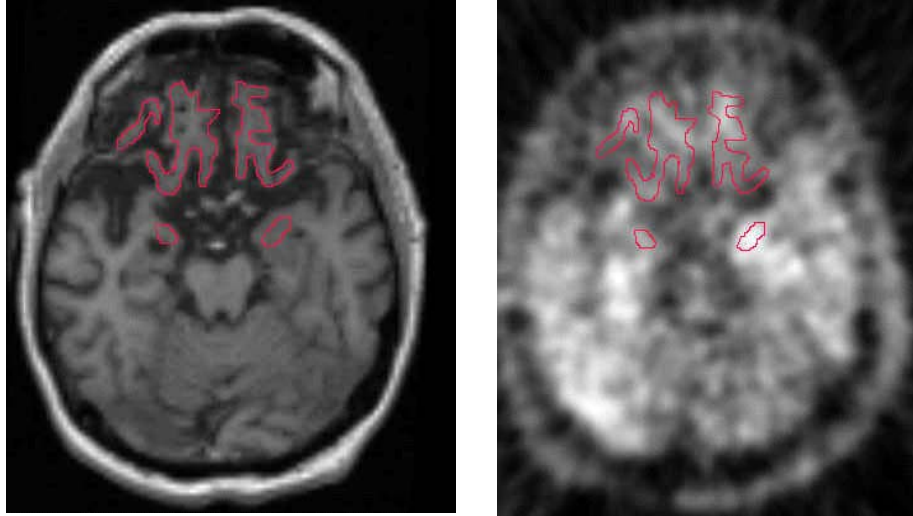


## **CONTROL SUBJECTS NEEDED**

### **SEROTONERGIC STATUS IN PSYCHOSIS DUE TO DEMENTIA**



Baycrest and the Centre for Addiction and Mental Health (CAMH) are conducting a study examining changes in brain chemistry that may be related to behavioral symptoms in Dementia.

#### **Why is the study being conducted?**

The study is being conducted to understand how psychosis arises during dementia. This may lead to more effective ways to treat psychosis when it occurs in patients with dementia.

#### **Who can participate?**

Participants must be between the ages of 60-80 years and should have no history of psychiatric disorder. You are being asked to participate because you are a healthy, non-impaired control whose results can be matched to someone with a clinical diagnosis of Dementia in our study.

#### **What is involved?**

Participation will involve two brain scans: an MRI (magnetic resonance image) and a PET (positron emission tomography) scan.

#### **Compensation**

Subjects will receive a cash honorarium to compensate for their time spent in participating. Travel reimbursement will also be provided.

#### **To refer or find out more please contact-**

Dielle Miranda

Research Coordinator (CAMH)

Ph # 416-535-8501, ext 3120