



June 2011

CAMH and Bell – Transforming Lives Together

On May 11, thanks to a spectacular \$10 million gift from Bell – the largest corporate donation given towards mental health in Canada – the CAMH Foundation marked an historic milestone in its Transforming Lives Campaign.

The CAMH Foundation announced that with the gift from Bell, it officially exceeded its \$100 million campaign goal, raising \$108 million, the largest fundraising campaign in North America for an addictions and mental health hospital.

In addition, it was unveiled that the Gateway Building, one of three CAMH buildings currently under construction, will now be named the Bell Gateway Building.

“The Bell team is proud to be an integral partner in the CAMH community and for its central entry point – the Bell Gateway Building – to so visibly carry our name,” said George Cope, President and CEO of

Bell and BCE Inc. “We support CAMH’s world-leading vision to promote mental health by integrating the best resources and talent within a community framework.”

“We’re extremely grateful to Bell for its generous donation and leadership in pushing us over the top in our campaign,” said Darrell Gregersen, President and CEO, CAMH Foundation. “This is proof that mental health in Canada is transforming... we now have more capacity than ever before to bring about change for those with mental illness.”

“This is an historic moment for all Canadians,” said CAMH President and CEO, Dr. Catherine Zahn. “Together with our donors, we have created a seismic breakthrough and raised unprecedented funds... to address the staggering impact of mental illness. The extraordinary success of this campaign sends a bold statement of hope to all Canadians who are living with mental illness.”



An artist's rendering of the Gateway Building displaying the Bell name.



From left to right: Darrell Gregersen, President and CEO, CAMH Foundation; George Cope, President and CEO of Bell and BCE Inc.; and Dr. Catherine Zahn, President and CEO, CAMH celebrate Bell's gift and the success of the Transforming Lives campaign.

Art Leading the Way at CAMH

"If the purpose of art is to nourish the spirit, what more appropriate place to find it than a Hospital, where our spirit may encounter its most critical moments."

– Eileen Lawton, NJ Council on the Arts

In a dramatic message of hope, comes the transformation of life. This essentially describes the artwork that will be adorning the main lobbies of the new Bell Gateway Building and the Intergenerational Wellness Centre. In addition, these art pieces will be reflected in way-finding and signage that will appear throughout the buildings.

Bell Gateway Building

The message of hope, growth, and rebirth is prominent in the aluminum sculpture of a green tree, centred among silver trees – the art piece that will be positioned in a glass enclosure on the second floor of the Bell Gateway Building. Here, light from the windows will showcase the piece both inside and outside the building.

Inside, with the subtle reflection of trees on the walls and floor, it will seem that we are walking among and interacting with nature. Outside, as the real trees and foliage grow, there will be a beautiful connection between the art piece and nature.

This selection was chosen from 57 art proposals submitted to CAMH in response to a call for proposals open to all Canadian artists. The call specified that proposed art pieces needed to fill the space, allow for light to flow through while also having reflective qualities, and be visible and clearly articulated from the inside and outside, noting that people would be looking up at it from the ground.

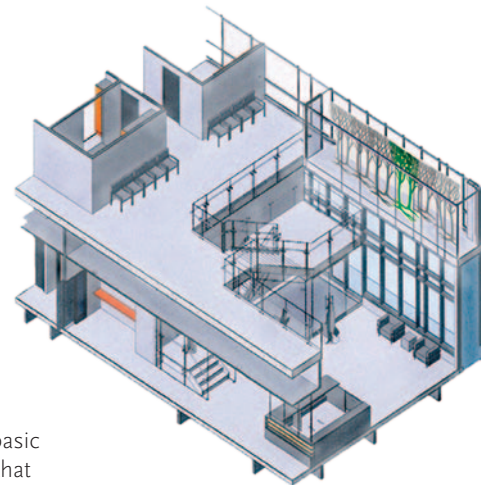
In addition, artists were encouraged to consider innovative and creative approaches to interpreting the theme: "Transforming Lives".

The tree design can also be easily viewed from the outside.



Sculptor Wynn Walters presented this original, creative piece that truly reflects the Transforming Lives theme and will allow those who flow through the Bell Gateway Building to interact with the trees in their own personal way. Walters works in stone and bronze and in steel and wood in a representational style with a focus on the human figure and portraiture, as well as on nature subjects. Walters has exhibited in galleries and exhibitions throughout Ontario and in the United States, and has a number of public sculptures installed in urban settings.

A rendering of how the tree art piece will be positioned in the second floor of the lobby of the Bell Gateway Building.



This image shows the basic design of the art piece that will adorn the second floor of the lobby of the Bell Gateway Building.



Intergenerational Wellness Centre

Horizontal and vertical lines and shapes, predominant colours of green and blue, and white lines that dance across the piece – all shape this mosaic that will embellish a full wall in the main lobby of CAMH's new Intergenerational Wellness Centre. In addition, five smaller works inspired by this main mural will be installed in the main floor corridor leading from the lobby.

This piece, with its lines and shapes, reflects the structure of the building in which it is being placed and can be interpreted as the restrictiveness a client can feel due to an addiction or a mental illness. The colours reflect a landscape that can be seen as an increasing freedom from the horizontals and verticals, as well as an increasing freedom from an addiction or a mental illness. The dancing white lines represent the joy of that freedom.

This selection was chosen from 53 proposals submitted to CAMH in response to a call for proposals open to artists who are members of Workman Arts or who have received services from CAMH. As with the art for the Bell Gateway Building, artists were encouraged to innovatively and creatively interpret the theme: "Transforming Lives"; but for this building, it would need to translate into a mosaic format.

The translation into a mosaic will be facilitated by Red Pepper Spectacle, a professional mosaics company, which will train a group of Workman Arts artists to execute the mosaic panels. As well, clients in CAMH's youth and geriatric programs will participate in the creation of the five smaller mosaic pieces based on this artwork. The goal is to realize enduring legacy artwork created by a collaborative community of CAMH clients and Workman Arts artists that will be enjoyed by the multi-generational clientele of the Intergenerational Wellness Centre.

A rough sketch of the art piece that will be translated into a mosaic for the Intergenerational Wellness Centre.



Artist Michael Morbach submitted this thoughtful and creative piece that illustrates the Transforming Lives theme and will enable those who reflect on its artistry and values to self-interpret the piece and its inspired elements. Morbach, a member of Workman Arts and the Creative Arts Studio, studied his craft at the Toronto School of Art. Over the years, he has had his works on display at a number of exhibitions, including the Mood Disorders Association of Ontario Touched by Fire, the Workman Arts Being Scene, the Workman Arts Group Show, and the Creative Works Annual Show exhibits.

CAMH Construction Update

All three CAMH buildings are now structurally complete. The roofs have been installed and the exteriors are being enclosed with windows and curtain walls.

Interior work is well underway; drywall work has started, mechanical and electrical installations are in progress, and almost all major equipment is in place.

Over the summer, the Utilities and Parking Building will be enclosed and will receive its exterior finishes. Similarly, the exteriors of the Bell Gateway Building and the Intergenerational Wellness Centre will near completion.

Interior work will continue throughout the summer and fall, which will require the deliveries of interior finishing materials. These deliveries will be well-scheduled and should take place with minimum disruption to our neighbours.

In late summer, the landscaping of the green roof of the Bell Gateway Building will take place. And, in late summer/early fall, hard (curbs and sidewalks) and soft (sods and soils) landscaping will occur, as will the laying of asphalt on the new roadways.

Over the summer, the Utilities and Parking Building seen here will be enclosed and will receive its exterior finishes.



All three CAMH buildings are now structurally complete. Here, the exteriors of the Bell Gateway Building (foreground) and the Intergenerational Wellness Centre (background) are being enclosed with windows and curtain walls.

Apartment Building Progress

It is expected that the non-CAMH building – now referred to as the Ossington-Queen Street Rental Apartments – will be ‘topped off’ by mid to late September, signifying that the highest point of the building has been reached.

In the meantime, the foundation walls and columns are underway and by mid to late June, the building will be at ground floor level. Throughout the summer, work on exterior finishes, such as brick work and windows, will be taking place.

Interested in renting?

Rental applications for this 179 unit building are now being accepted. For leasing information, call 416 486-4270, ext. 2502 or visit www.verdiroc.com.



Construction in the Summer

The contractors of both the CAMH construction site and the site of the Ossington-Queen Street Rental Apartments have been working hard to ensure that the streets are kept as clean as possible. Throughout the summer, activities such as street sweeping and street washing, the laying of gravel at entrances and exits, and the hosing down of trucks before they leave the sites will continue.

For More Information

If you have any inquiries about the CAMH Redevelopment Project, call 416 535-8501, ext. 3330 or send an email to redemption_feedback@camh.net. You can also view the Queen Street Redevelopment section on the CAMH website: www.camh.net.